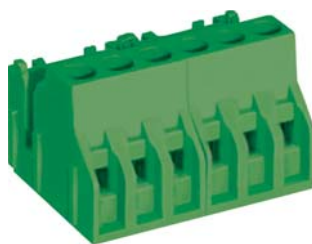
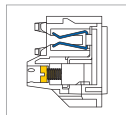


# MC030 Pluggable PCB Connectors



MC

## DIMENSIONS/POSITIONS

## MC030-500

間距	Pitch	5.00mm
位數	Poles	3Poles
塑膠本體	Housing Material	PA 66
壓線圈	Cage Clamp	Brass, Ni Plated
導電夾片	Contact	Phosphor Bronze, Tin Plated
螺紋	Screw Thread	M2.5, Steel, Zinc Plated
電線線徑	Wire Size	12 ~ 28AWG
最大緊固扭矩	Tightening Torque, Max.	4.34 Lb-in
環境作業溫度	Operating Temperature	-40° C to +105° C

## TECHNICAL DATA

連接符合標準 Connection in acc. with standard EN-VDE		
額定電流 I <sub>n</sub>	Nominal Current I <sub>n</sub>	6A
額定橫截面	Nominal Cross Section	-
最大負載電流	Maximum load current	6A
絕緣材料	Insulating Material	PA
阻燃等級,符合UL94 Inflammability class acc. to UL94		V0
額定電壓,UL/CUL Nominal voltage, UL/CUL		300V
額定電流,UL/CUL Nominal current, UL/CUL		6A

